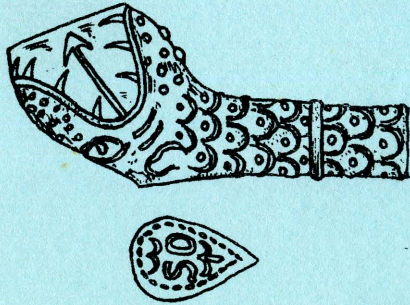


SOCIETY *for* CLAY PIPE RESEARCH



NEWSLETTER

52



Autumn/Winter 1997

## SCPR 52: CONTENTS

Society News	1
Information requested	3
Cornish pipes and pipemakers (Phil Nicholls)	3
Cambridgeshire pipemakers (Craig Cessford)	4
Westminster pipemakers (Kieron Heard)	4
Bowls from Bermondsey, Southwark (David Atkinson)	4
Bath Conference, 1997, by Marek Lewcun	6
11th meeting of the German Society for Research into Clay Pipes at Nordhausen, 3 and 4 May 1997, by Martin Kügler	24
The oldest decorated pipe bowl, by Don Duco	28
Clay-pipemaker contacts between England and Sweden, by Arne Åkerhagen	31
A 17th-century statuette (Phillip Woollard)	37
Some clay pipe bowls from Covent Garden, London, by Craig Cessford	38
A group of clay tobacco pipes from Marrick, North Yorkshire, by David Higgins	40
A pipe from Barcelona Harbour, Chautauqua County, New York State, by David Higgins	44
A porcelain pipe? from Oudepost 1, Cape Province, South Africa, by Otto H.T. Graf	47
The Smith family, pipemakers of Manchester: a continuation, by Ron Dagnall	50
Edward Gilson of Cambridge and Potton, by Craig Cessford	53
John Buxton, pipemaker of Colchester, by Phillip Woollard	54
Pipemakers in Greenwich, by Phillip Woollard	54
More Suffolk pipemakers, by Derek Markell	56
W. Lockett, by Roy Mitchell	56
Pipemakers from Mile End, Middlesex, by Derek Markell	57
Belfast clay tobacco pipemakers, 1819-1946, by David Higgins and Susie White	58
Croydon (St John Simpson)	64
A 7-bowled pipe from the West Midlands, by Phillip Woollard	65
Points Arising: Metal pipes, Buenos Aires pipe-stem, Hampstead bowl (Don Duco)	66
Publications	67
Changes of address, New members	<i>(inside back cover)</i>
Information, Abbreviations	<i>(inside back cover)</i>

## SOME CLAY PIPE BOWLS FROM COVENT GARDEN, LONDON

Craig Cessford

Four complete clay pipe bowls were recovered at Covent Garden in 1996 (Fig.16):

- 1 Oswald type 12 (1780-1820) with fluting on the bowl and oak leaves on the stem. It bears the maker's mark WB on the heel.
- 2 Oswald type 24 (1810-40) with oak leaves on the front and rear of the bowl.
- 3 Oswald type 24 (1810-40) with oak leaves on the front and rear of the bowl. It bears the maker's mark WW on the spur.
- 4 Oswald type 24 (1810-40). It bears the maker's mark RO on the spur. On the rear of the bowl is a circle of dots with OSBOR[NE] & CO/L[ON]DON and a City of London shield within it. This can be identified with the maker Robert Osborne who is known from Directory evidence to have been active in Shoreditch between 1836 and 1845 (Oswald 1975, 142).

Both bowls 1 and 2 could have been made by a number of makers listed by Oswald (1975, 132 and 149).- Bowl No.1 was a stray find; bowls 2-4 all belong to the same bowl type, share a common brown patina and were found together in a location which strongly suggested that they came from a sewer which is probably related to the Royal Opera House.

### Reference

Oswald, A. 1975, *Clay Pipes for the Archaeologist*, BAR 14, Oxford

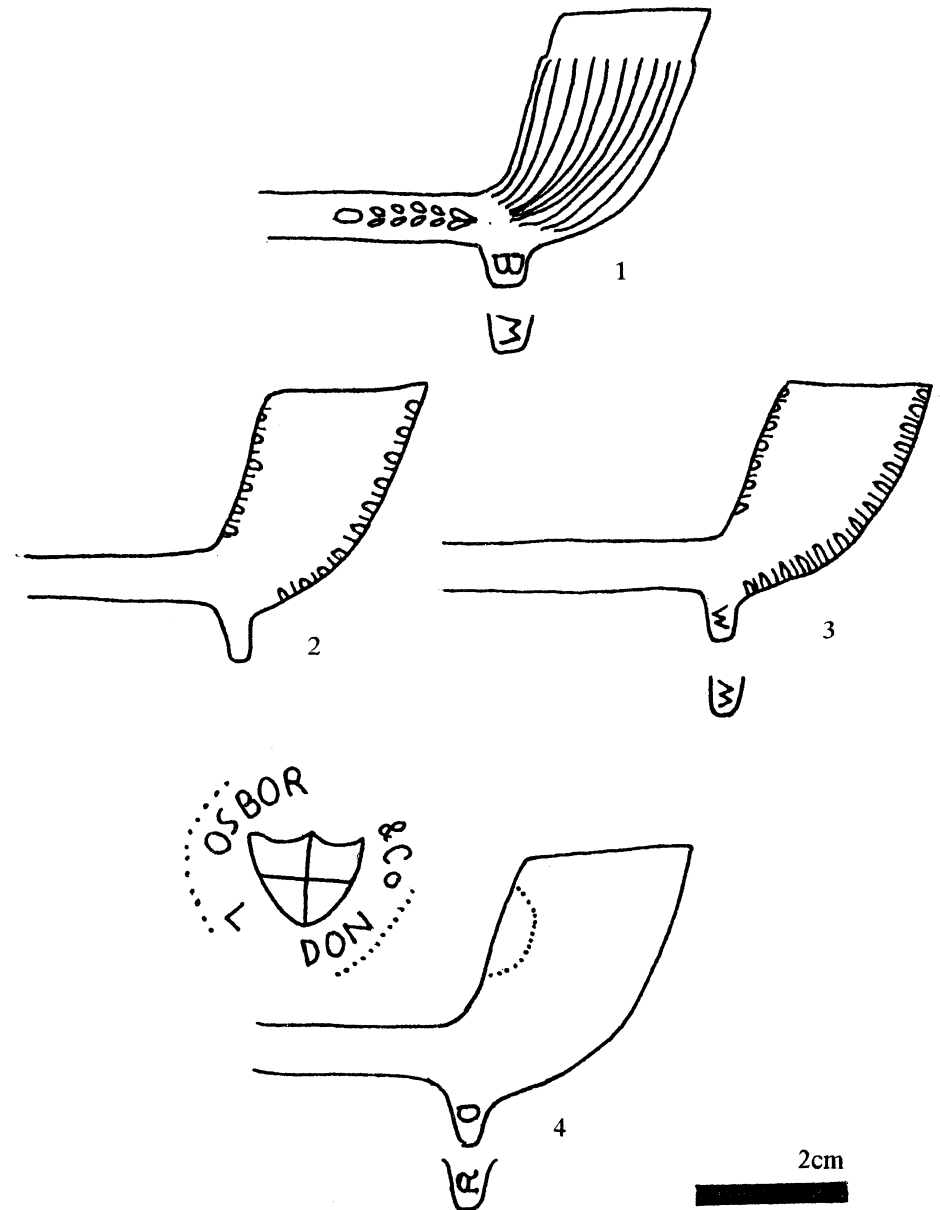


Fig.16 Pipes from Covent Garden, London  
(mark at 2:1)